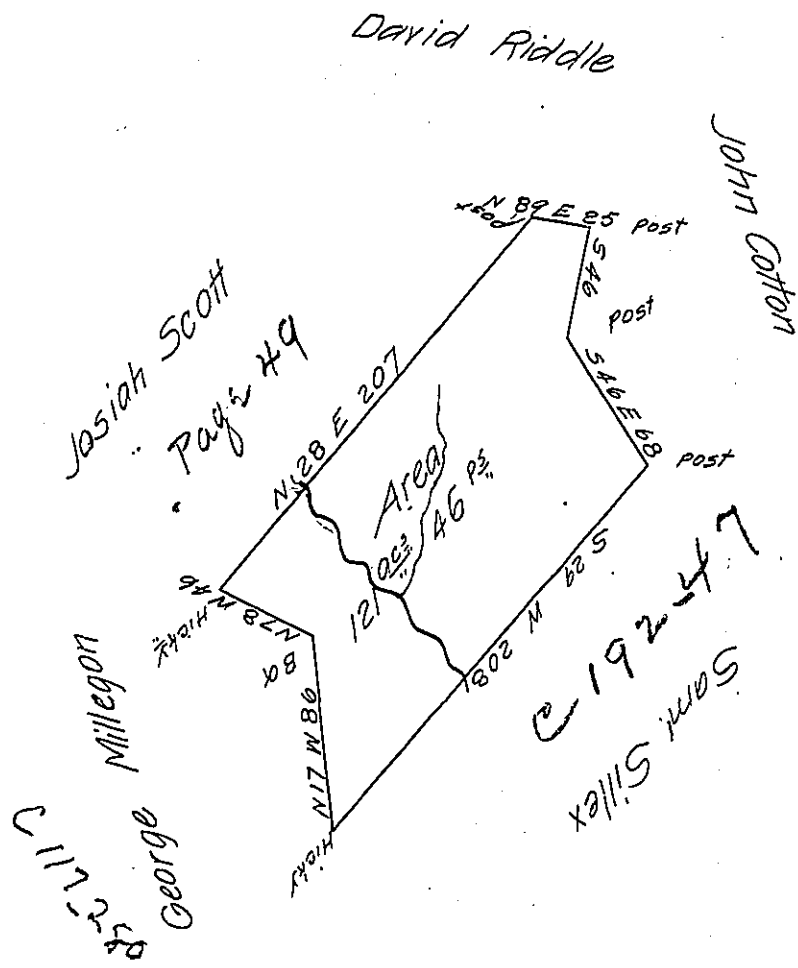


X  
63

P-14-274

2-150



Not Josiah Scott's other plot begins at the post adjoining David Riddle.

The above is a draught of a Tract of Land lying upon the Waters of Chartiers Creek Washington County Called Scotts Addition Surveyed March 10<sup>th</sup> 1788 In pursuance of a Warrant Granted to Matthew Steen, <sup>June 5<sup>th</sup> 1786</sup> Containing One Hundred and twenty one Acres and forty Six perches with the usual Allowance.

John Lukens Esq<sup>r</sup> }  
Survey<sup>r</sup> Genl }

Presley Nevill }  
Matthew Ritchie } D.S.

IN TESTIMONY that the above is a copy of the original remaining on file in the Department of Internal Affairs of Pennsylvania, made conformably to an Act of Assembly approved the 16th day of February, 1833, I have hereunto set my Hand and caused the Seal of said Department to be affixed at Harrisburg, this eleventh day of December 1906.

*Joac R Brown*  
Secretary of Internal Affairs.